

Casmerodius albus

GREAT EGRET

Non-SPEC (1994: —) Status Secure

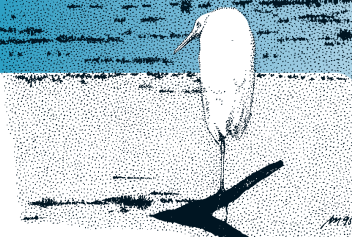
Criteria —

European IUCN Red List Category —

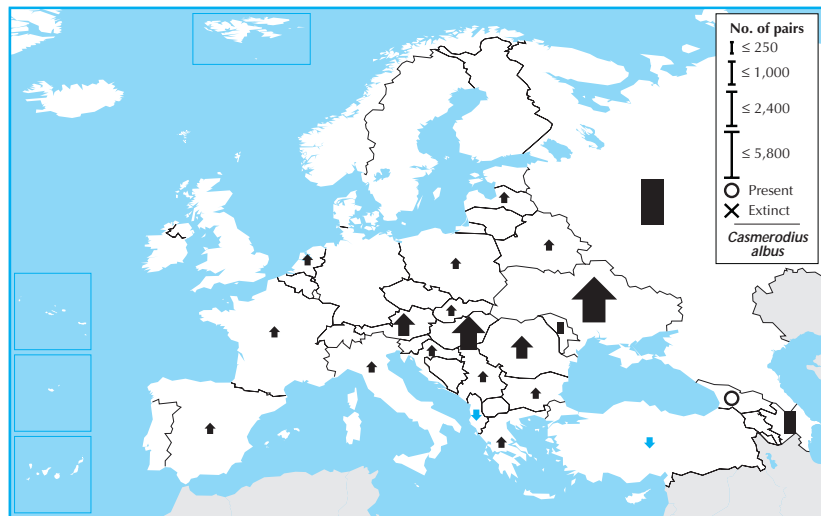
Criteria —

Global IUCN Red List Category —

Criteria —



Casmerodius albus is a widespread but patchily distributed breeder across much of Europe, which accounts for a tiny proportion of its global breeding range. Its European breeding population is relatively small (<24,000 pairs), but increased between 1970–1990. The species continued to undergo a large increase during 1990–2000, with positive trends across almost all of its European range—including key populations in Ukraine and Hungary—and the sizeable Russian population stable. Consequently, the species is evaluated as Secure.



Country	Breeding pop. size (pairs)	Year(s)	Trend	Mag.%	References
Albania	(0 – 2)	96–02	–	>80	4
Austria	580 – 720	98–02	+	>80	
Azerbaijan	250 – 800	96–00	0	0–19	
Belarus	10 – 30	97–00	+	N	
Bulgaria	4 – 20	99–02	+	50–79	
Croatia	10 – 50	02	+	50–79	54,26
France	15 – 20	00	+	>80	1
Georgia	Present	03	?	–	
Greece	(10 – 30)	98–00	(+)	(0–19)	
Hungary	1,800 – 3,000	97–02	+	50–79	
Italy	37 – 45	00	+	50–79	18
Latvia	2 – 5	00–03	+	20–29	22,17,26,13,14
Moldova	10 – 15	90–00	0	0–19	
Netherlands	1 – 11	98–00	+	271	1
Poland	20 – 25	02	+	N	2,4,5,6
Romania	900 – 1,100	00–02	+	0–19	47
Russia	3,000 – 10,000	90–00	0	0–19	8,24,73,114,120,60
Serbia & MN	200 – 300	00–02	+	20–29	163,138,65,115,155,156,7,8
Slovakia	0 – 80	80–99	+	20–29	
Spain	0 – 50	98–02	+	>80	10
Turkey	50 – 150	01	–	50–79	
Ukraine	4,500 – 7,300	90–00	+	30–49	

Total (approx.) 11,000 – 24,000
 Breeding range >250,000 km²
 Overall trend Large increase
 Gen. length 5 % Global pop. <5

Country	Winter pop. size (individuals)	Year(s)	Trend	Mag.%	References
Azerbaijan	1,000 – 2,000	96–02	–	30–49	
Bulgaria	596 – 869	97–01	+	>80	
Croatia	1,000 – 2,000	02	(+)	(–)	16,26
France	900 – 2,500	98–02	+	30–49	9
Greece	1,250 – 1,950	95–99	(0)	(0–19)	
Hungary	250 – 1,000	90–00	F	>80	24
Italy	300 – 5,000	02	+	>80	22
Romania	250 – 1,000	90–00	0	0–19	60
Serbia & MN	1,000 – 2,000	90–02	+	40–69	
Turkey	1,500 – 2,500	91–01	0	0–19	

Total (approx.) >8,600
 % in European IBAs 45–74
 Overall trend Moderate increase
 Gen. length 5 % Global pop. <5

2000 population	81	19		
1990 population	98			
Data quality (%) – <i>Casmerodius albus</i>				
	□ unknown	□ poor	▒ medium	■ good
1990–2000 trend	45	55		
1970–1990 trend	77	21		